

Write to  
 Jenni Nicol  
 Sandringham  
 CRE.



22nd December 1987

Dear Exhibitor,

It's all systems go with the 2nd Alternative Medicine & Healthy Lifestyle Exhibition. Sixty of the 100 Stands have been booked and enquiries are coming in daily.

Watch out for the February - March issue of Whole Health Magazine. We have a centrespread devoted to the Exhibition with a full run down of the free lectures and other activities.

The speakers have all been confirmed and they include English healer and author Edmond Harold, and Principle of the Acupuncture College of Australia, Dr Carole Rogers.

A note for your diary is Friday night before the Exhibition, March 11th. Grant Dillon and his colleagues at the Healing Centre, 8 Ponsonby Rd are organising a gathering for Exhibitors. A really enjoyable aspect of the previous Exhibition was the chance to meet new friends and catch up with old ones, so here is an excellent opportunity to share and celebrate. Thanks to Grant, and more details later.

In case you have not already done so, a 50% deposit is due to be paid before Jan 1st.

May I wish you a happy, healthy holiday, and an exciting and challenging new year.

Chris Cooper  
 ORGANISER



Dear **NICOLETTE**,

Greetings. The response to the Exhibition has been tremendous, beyond expectations, and now the publicity has gone out I am getting many calls and letters daily from the public. The number of stands has grown to 80.

This is your Exhibition check list:

- SET UP** For stands 1 to 40, 41 to 54, 76 to 79, 69 & 70, 7.30 am Sat.  
For stands 58 to 68 and 71 to 79 - 8.00 am Sat.
- POWER** If you require power, please bring a couple of extension leads and double adaptors.
- CHAIRS & TABLES** Any number of these are available, the tables measure 1.40 x 80cm and the chairs are moulded P.V.C. The tables will need covering.
- SECURITY** The building will be locked as soon as people are cleared after 6.00 pm on Saturday, and will be unlocked for exhibitors at 9.00 am on Sunday.
- PROGRAMME** The programme will list additional activities e.g. live meditation, music, tai chi, sacred dance and healing demonstrations. It will also list your exhibit as follows:

**STAND No 8**

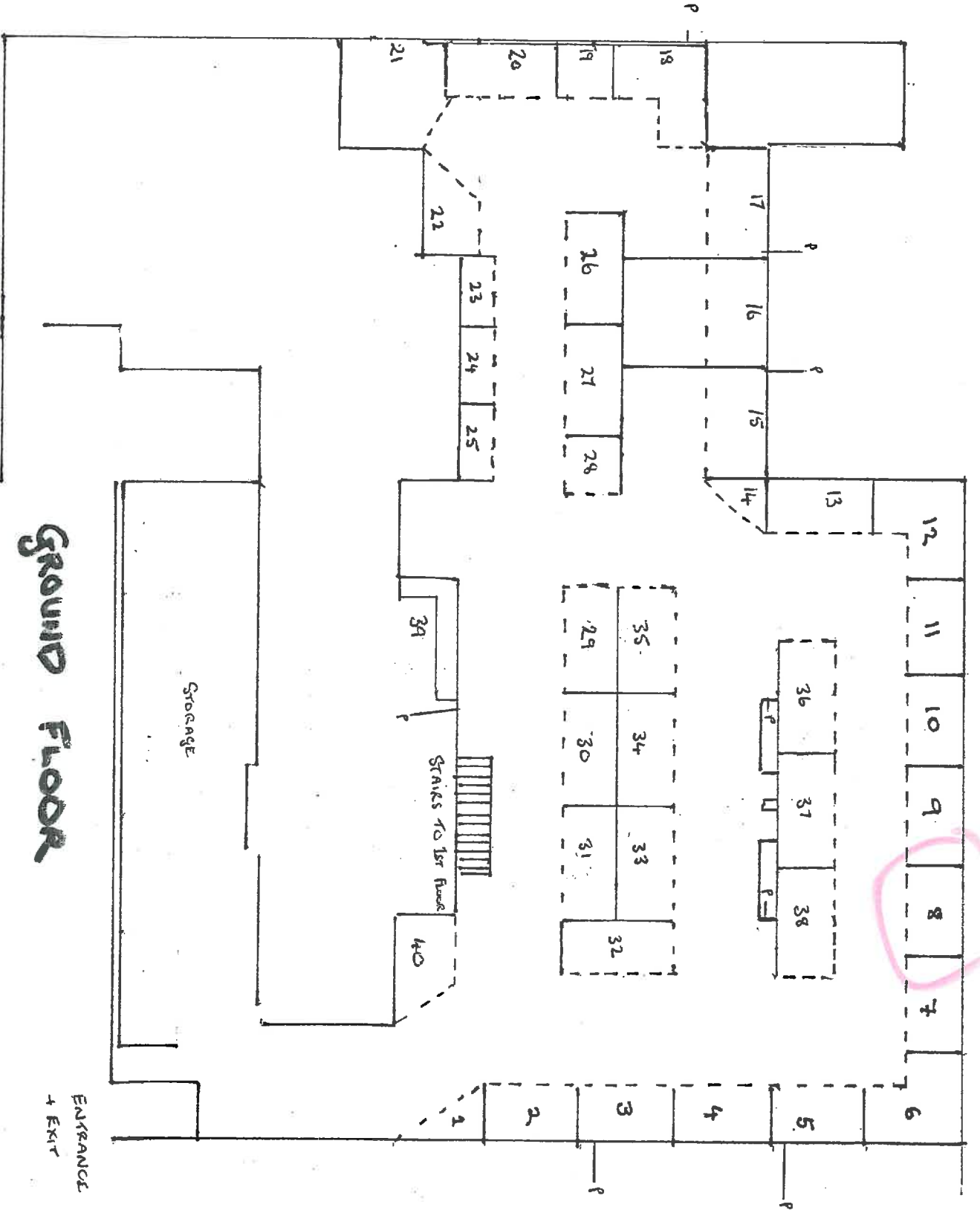
**HOME BIRTH ASSN. P.O. Box 7110 WELLESLEY ST.**

Any alterations please call immediately.

**DECORATION** Please try to make your stand as attractive and vibrant as possible.

Finally may I thank you for your participation, it has been exciting to be involved with yourselves and the Exhibition, and I look forward to a productive, positive and fun weekend.

  
**CHRIS COOPER**  
**ORGANISER.**



**GROUND FLOOR**

ENTRANCE  
+ EXIT



**DISPLAY & EXHIBITION  
CONSULTANTS LIMITED**

26 PONSONBY ROAD, AUCKLAND 2,  
NEW ZEALAND. PHONES: 764-871, 762-663

A DIVISION OF  
PEEK SIGNS AND DISPLAYS LTD.

17th February 1987

Ms N Emmerson  
Home Birth Association  
PO Box 7093  
WELLESELEY ST

Dear Ms Emmerson,

ALTERNATIVE MEDICINE EXHIBITION  
21ST - 22ND MARCH 1987

We wish to advise that we have once again been appointed by the Organisers of the above show to erect our 'Dec' Deluxe wall partitions and enclose our brochure covering the specifications.

DEC DELUXE WALL PARTITIONS: Neutral beige hessian walls, 2.1 metres high. Articles may be tacked, pinned or stapled to the walls but any larger holes or damage to the partitions will be charged at cost to the exhibitor.

EXHIBITION RENTAL DISPLAY EQUIPMENT: Attached is our list of display equipment which is available for hire. All prices include delivery to your stand, hire and collection after the show. Prices do not include GST. Insurance is the hirer's responsibility please.

DESIGN AND BUILD SERVICE: May we draw your attention to our Design and Build Service operated through our associate Company, PEEK SIGNS & DISPLAYS LTD, where we have achieved a recognised expertise in this field, many of our designs having won awards for 'Best in the Show' at numerous trade fairs.

We look forward to being of assistance to your Company, and invite you to telephone or call us. We have prototype booths set up at 26 Ponsonby Road to help you visualise what you can do.

Yours faithfully

A handwritten signature in black ink, appearing to read 'K Howell', is written over the typed name.

K Howell  
MANAGER



NICOLETTE + FRIENDS

I am writing to thank you for your contribution to the Exhibition. The quality of stands was excellent and the reaction from exhibitors and the public has been very positive.

The lectures were fascinating and really worthwhile although we lost money on them, and overall there was sufficient profit to pay my wages for five weeks.

More important of course, was the 'wholistic' benefit we all gained from the event, and the interest and impetus it created. For example, you may be aware of the Festival of Family Awareness at Fairfield College, Hamilton on May 16, and there is a health Expo planned for May '88 in Whangarei.

Together with the excellent Whole Health magazine recently published, we are experiencing an exciting new phase in the promotion of wholistic health and lifestyles.

The 2nd Alternative Medicine Exhibition will be held in late March '88, the weekend after Fiesta, probably at the same venue. There will be more room, more new ideas, more publicity and hopefully more people coming through.

Many lessons were learned, knowledge and experience gained, and with your involvement and enthusiasm, we may have a greater success in '88.

I am leaving shortly for England on a long planned trip to take in the AME in London and to visit family. Many thanks again, I will be in contact on my return in October.

Peace and health

A handwritten signature in black ink, appearing to be 'Chris Cooper'.

Chris Cooper  
11th May 1987





15 October 1987

**Dear Friends,**

Greetings. Preparations are under way for the 1988 Exhibition on the 12th and 13th March, at the Students Union Building. We will all be better prepared this time, and therefore more effective and able to create an exciting learning experience for us all to enjoy.

There are several changes, all designed to make this year's Exhibition more appealing for exhibitors and the public, mainly:

- \* There is a name change - it is now the **Alternative Medicine and Healthy Lifestyle Exhibition**.
- \* The lectures in the Maidment complex will be free of charge.
- \* A new floor plan for the ground floor to relieve congestion, particularly around the stage.
- \* Exhibitors will be able to use the underground car park.
- \* Admission remains at \$5 but a special reduction will be offered by mail, to all those who registered last time.

I am negotiating to bring in a mediaworthy personality to lecture and generate publicity in the week running up to the Exhibition. If you know of anyone who may be suitable, or have any ideas about lectures or anything else I would love to hear from you.

Already I have had some bookings in the mail, so please contact me a.s.a.p. with your requirements. The stands will be similar to last time, with a small increase in cost i.e.

3.0 x 1.8 2 sides, hessian, \$180  
3.6 x 1.8 3 sides, hessian, \$280

The Exhibition will cost in excess of \$15,000 to run, and as last time, non-profit groups will be accommodated somehow.

I look forward to your continued support and input.

Health and peace,

  
**CHRIS COOPER,  
ORGANISER**